

Methodology article

Open Access

## Purification and characterization of recombinant human renin for X-ray crystallization studies

Zhongren Wu\*, Maria G Cappiello, Boyd B Scott, Yuri Bukhtiyarov and Gerard M McGeehan

Address: Vitae Pharmaceuticals Inc., Discovery Biology, Fort Washington, PA, 19034, USA

Email: Zhongren Wu\* - [zwu@vitaerx.com](mailto:zwu@vitaerx.com); Maria G Cappiello - [mgcappiello@yahoo.com](mailto:mgcappiello@yahoo.com); Boyd B Scott - [boyd\\_scott@merck.com](mailto:boyd_scott@merck.com); Yuri Bukhtiyarov - [ybukhtiyarov@vitaerx.com](mailto:ybukhtiyarov@vitaerx.com); Gerard M McGeehan - [gmcgeehan@vitaerx.com](mailto:gmcgeehan@vitaerx.com)

\* Corresponding author

Published: 26 June 2008

Received: 14 January 2008

BMC Biochemistry 2008, 9:19 doi:10.1186/1471-2091-9-19

Accepted: 26 June 2008

This article is available from: <http://www.biomedcentral.com/1471-2091/9/19>

© 2008 Wu et al; licensee BioMed Central Ltd.

This is an Open Access article distributed under the terms of the Creative Commons Attribution License (<http://creativecommons.org/licenses/by/2.0>), which permits unrestricted use, distribution, and reproduction in any medium, provided the original work is properly cited.

### Abstract

**Background:** The renin-angiotensin-aldosterone system (RAS) cascade is a major target for the clinical management of hypertension. Although inhibitors of various components of this cascade have been developed successfully, development of renin inhibitors has proven to be problematic. The development of these inhibitors has been hindered by poor bioavailability and complex synthesis. However, despite the challenges of designing renin inhibitors, the enzyme remains a promising target for the development of novel treatments for hypertension. X-ray crystallographic data could greatly assist the design and development of these inhibitors. Here we describe the purification and characterization of recombinant human renin for x-ray crystallization studies.

**Results:** A cDNA encoding the full length of native human preprorenin (406 amino acid residues) was introduced into the HEK-293 cell line. A clonal cell line expressing prorenin was generated and grown under serum free conditions in a hollow fiber bioreactor. Prorenin was constitutively secreted and purified directly from the conditioned medium. Concanavalin A chromatography effectively enriched and purified prorenin to 90% homogeneity in a single step. Prorenin was converted to active renin by trypsin digestion to remove the propeptide. Active renin was further purified using a cation exchange column followed by a gel filtration column. Biochemical characterization of the recombinant enzyme showed both binding and catalytic properties were essentially identical to previously reported activities for purified renin. Crystals were grown using this material in our X-ray structure studies, and high resolution diffraction was obtained.

**Conclusion:** This present work describes a simple and efficient method for the generation and purification of active human renin. The protein is highly pure and is suitable for supporting structural biology efforts.

### Background

The renin-angiotensin system (RAS) is a hormone system that regulates blood pressure and extracellular volume in the body. The RAS sequentially processes angiotensino-

gen to angiotensin II (Ang II), a peptide hormone that is a potent vasoconstrictor. Inhibition of RAS components has been used successfully in the treatment of hypertension, heart failure and end organ damage. Renin catalyzes the

first and rate-limiting step of the RAS cascade and renin is specific for angiotensinogen. Blockade of Ang II production by direct inhibition of renin has long been a therapeutic goal. Early renin inhibitors, such as enalkiren and remikiren, were effective in blood pressure lowering. However, due to poor oral bioavailability, duration of action, and high costs of synthesis, these early peptidomimetic inhibitors never progressed to pivotal clinical studies [1]. Continued clinical interest in renin has led to the recent approval of the first renin inhibitor, aliskiren (Tekturna™), a non-peptidic inhibitor of renin, which has generated an interest in finding newer renin inhibitors with improved profiles.

Renin is a member of the aspartic acid protease family. The human renin gene encodes for a protein consisting of 406 amino acids. It is proteolytically processed and secreted as a 384 residue zymogen, prorenin, which contains a 46 amino acid propeptide. The propeptide serves as an autoinhibitory domain that controls the enzyme activity. The pro segment must be removed to generate mature, fully active renin. Prorenin is synthesized principally by juxtaglomerular cells in the wall of the afferent arteriole of the kidney and is released into the bloodstream.

Renin was first purified from animal tissues, including submaxillary glands and kidneys. Yields were generally very low. For instance, Yokosawa et al [2] obtained only 440 µg of pure renin from 22 kg of non-cancerous autop-

sied human kidneys. Using recombinant techniques, renin has been expressed and purified from eukaryotic cell lines including CHO cells [3,4], mouse L-929 cells, sf9 insect cells [5] and DAMP cells [6]. Active renin had also been over-expressed in *Escherichia coli* and successfully refolded [7-9]. In order to supply enzyme to support our structure-based design efforts, we developed an efficient system for renin production and purification in amounts sufficient to support routine X-ray crystallography. Herein, we report a simple procedure for renin expression and purification that exploits the affinity of glycosylated renin for Con A. Generally, multi-milligram quantities of material can be prepared from the conditioned medium of HEK cell culture. The active renin protein prepared has been used successfully to support activity assays and to generate high resolution crystal complexes with bound inhibitors.

## Results and discussion

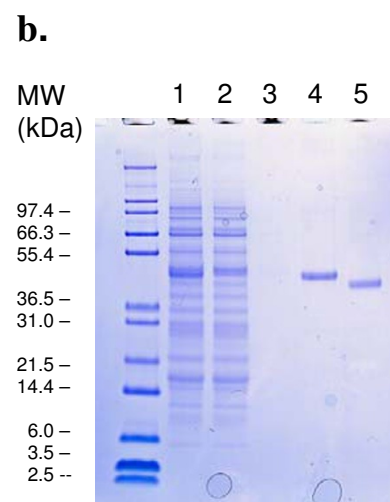
The recombinant human renin gene was transfected into the human kidney cell line, HEK-293. A clonal cell line expressing significant levels of prorenin was prepared by limiting dilution. Analysis of the conditioned media of multiple clones identified a single clone that was scaled and transferred to growth in a hollow fiber bioreactor. This line was subsequently adapted to growth in serum free media. The recombinant human prorenin was constitutively secreted into the medium with concomitant removal of the 23 amino acid long N-terminal signal peptide (Fig. 1a). Although serum-free medium was used to

**a.**

```

1   MDGWRMPRW GLLLLLWGSC TFG LPTDTTT FKRIFLKRMP SIRESLKERG
51  VDMARLGPEW SQPMKR LTLG NTTSSVILTN YMDTQYYGEI GIGTPPQTFK
101 VVFDTGSSNV WVPSSKCSRL YTACVYHKLF DASDSSSYKH NGTELTTRYS
151 TGTVSGFLSQ DIITVGGITV TQMFGEVTEM PALPFMLAEF DGVVGMGFIE
201 QAIGRVTPIF DNIISQGVLK EDVFSFYYNR DSSENSQLGG QIVLGGSDPQ
251 HYEGNFHYIN LIKTGVWQIQ MKGVSSVGSST LLCEDGCLAL VDTGASYISG
301 STSSIEKLME ALGAKKRLFD YVVKCNEGPT LPDISFHLGG KEYTLTSADY
351 VFQESYSSKK LCTLAIHAMD IPPPTGPTWA LGATFIRKFY TEFDRRNRI
401 GFALAR

```



**Figure 1**

**a.** Amino acid sequence of the recombinant human preprorenin. The underlined 23 residues are the signal sequence (1–23), the residues in italics are propeptide (24–66) and the remaining residues are the mature renin protein (67–406). **b.** SDS-PAGE profile of renin purification. Lane 1, Conditioned medium (load to Con A column); Lane 2, Con A flowthrough; Lane 3, Con A column wash; Lane 4, Eluted prorenin; Lane 5, Prorenin digested with trypsin.

grow the cells, the small amounts of other proteins (mainly BSA, as analyzed on SDS-PAGE gels) were found as contaminants.

Prorenin has two N-linked glycosylation sites (N<sub>71</sub>TT) and (N<sub>141</sub>GT). The glycosylated prorenin has reasonable affinity for Con A and this interaction was used to purify the protein to high purity in a single step. To our surprise, the major contaminating protein, BSA, did not bind to the Con A resin. The bovine serum had been used in the culture medium initially when the cell line was adapted to the serum-free medium and BSA was a major component. Therefore, the Con A chromatography is more like a step of prorenin enrichment and any major contaminants were removed subsequently with cation exchange chromatography.

After the hollow fiber bioreactor system was set up for the prorenin expression, the conditioned medium was collected, about 30 ml a day, which was pooled and loaded onto the Con A column. For one typical manageable purification experiment, 250–300 ml containing approximately 50 mg proteins was used. The column was washed until the baseline was stabilized. In order to improve the yields, the column was "soaked and then eluted" with the buffer containing D-methyl-mannopyranoside at the low flow rate. Usually, two or three cycles of the soaking/eluting were applied in order to maximize the recovery. The volume of the pooled materials containing mainly prorenin (12–18 mg) was reduced to approximately 30 ml by the Millipore ultrafiltration device, followed by activation and further purification (Fig. 1b). No other detectable endogenous Con A binding proteins were observed by Coomassie stained SDS-PAGE gels.

The Con A material was converted to active renin by digestion with trypsin. Trypsin cleaves after residue Arg<sub>66</sub>. Conditions were optimized using different temperature, time and amounts of trypsin. The final conditions were described in the experimental section and provide mild proteolysis for quantitative conversion of prorenin to active renin (Fig. 1b). Prolonged trypsin treatment did not appear to result in any internal cleavage of the protein, and generally one hour incubation at 4°C with trypsin afforded a complete conversion from prorenin to renin indicating that the propeptide trypsin-cleavage site was accessible.

After digestion, trypsin was removed with trypsin-inhibitor agarose beads. Any other contaminants or misfolded renin proteins were removed with cation exchange chromatography (SP Sepharose Fast Flow, data not shown). Approximately 60–70% of the total proteins were removed at this step. The final step of purification involved with a size exclusion column, resulting in a purified

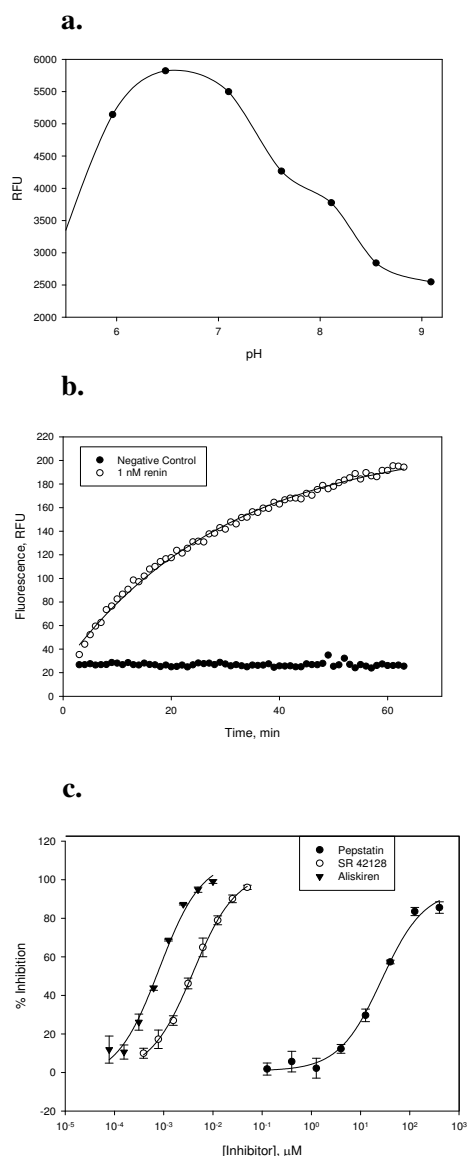
activated renin of >98% purity, as estimated by the reducing SDS-PAGE analysis. The conversion of prorenin to renin by trypsin results in removal of 46 amino acids, approximately 5.2 kDa. Because of heterogeneous nature of glycosylation [10], prorenin and renin migrated on the SDS-PAGE gel as broad bands of around 50 kDa and 42 kDa, respectively (molecular weight of the DNA-deduced polypeptides of prorenin and renin were 42,319 and 37,233, respectively, see Table 1). The proteins were analyzed by the N-terminal sequencing and mass spectrometry for further characterization of the proteolytic activation. The N-terminal sequence analysis confirmed that the first residues of the mature renin were LTLGXT and verified the complete removal of the propeptide (Table 1). The X represents the asparagine residue (N<sub>71</sub>) which is a glycosylation site. Mass spectrometry analysis indicated that glycosylation of renin added from 4 to 7 kDa to the molecular weight, based on the calculated DNA-deduced amino acid sequence. The discrepancy of molecular weights might be related to variations in growth conditions and reagents from batch to batch because of the heterogeneous nature of glycosylation (oligosaccharides varying in the number of sugar residues). The sugar moieties were removable by endoglycosidase H treatment only in partially denatured proteins under conditions of 1% SDS at 37°C overnight (data not shown). In our crystallization studies and biological assays, the sugar moieties were not removed. Typically, 1–3 mg of protein could be obtained from one batch of purification using approximately 250 – 300 ml starting conditioned medium (containing 40–50 mg proteins), depending on cell well-being, growth conditions and other procedural irregularities.

The activated renin was characterized in a functional assay (Fig. 2). The catalytic activity was measured using the commercially available substrate, DABCYL-γAbu-Ile-His-Pro-Phe-His-Leu-Val-Ile-His-Thr-EDANS, which is based on the angiotensinogen sequence [11]. Velocity of reaction was initially followed by HPLC and exhibited hyperbolic dependence on substrate concentration consistent with Michaelis-Menten kinetics with an apparent K<sub>M</sub> of 3.6 μM (data not shown). This value is similar to the K<sub>M</sub> of 1.5 μM reported in the literature based on the FRET assay [11]. The catalytic efficiency of recombinant renin

**Table 1: Summary of physical properties.**

Protein	N-terminal sequencing		MALDI-MS	
	analyzed	expected	analyzed	expected
prorenin	LPTDTT	LPTDTT	49,580*	42,319
renin	LTLGXT	LTLGNT	41,068*	37,233

\*the representative major molecular weight peak from several batch of samples.



**Figure 2**

Biochemical characterization of recombinant renin. **a.** The pH rate profile of the hydrolysis of DABCYL- $\gamma$ Abu-Ile-His-Pro-Phe-His-Leu-Val-Ile-His-Thr-EDANS with recombinant human renin. The optimal pH is around pH 6.5 with a poorly defined shoulder at pH 8. **b.** Full progress curve of the cleavage of fluorogenic substrate with recombinant human renin. The enzyme (1 nM) was incubated at 37°C with 1  $\mu$ M DABCYL- $\gamma$ Abu-Ile-His-Pro-Phe-His-Leu-Val-Ile-His-Thr-EDANS ( $[S] \ll K_M$ ). **c.** Inhibition of recombinant human renin by standard inhibitors. The percent inhibition is plotted as a function of inhibitor concentration for aliskiren (○), SR 42128 (□) and pepstatin (●). The line through the data is the least squares fit to a four parameter equation describing inhibition, and the  $IC_{50}$  values determined are 0.8 nM (aliskiren), 4 nM (SR 42128) and 31  $\mu$ M (pepstatin A), respectively.

was determined using the DABCYL-EDANS substrate. The enzyme had a second order rate constant ( $k_{cat}/K_M$ ) of  $4.7 \times 10^5 \text{ M}^{-1}\text{s}^{-1}$ . This value is close to the published catalytic efficiency of  $6.9 \times 10^5 \text{ M}^{-1}\text{s}^{-1}$  [6] and  $3 \times 10^5 \text{ M}^{-1}\text{s}^{-1}$  [12] for the cleavage of angiotensinogen tetradecapeptide by purified human renin [6,12].

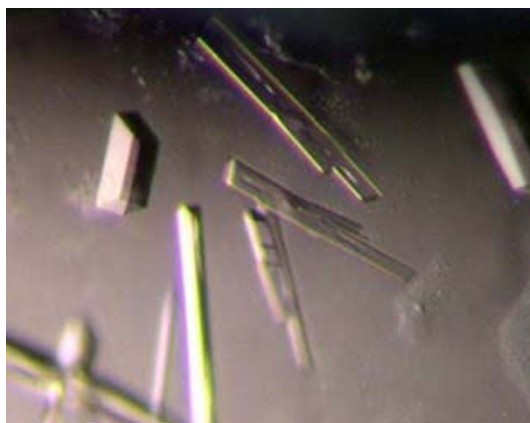
Enzymatic activity of the recombinant human renin was measured in a pH-rate profile. Activity was measured between pH 5.4 and 9.1 in 0.5 pH units (Fig. 2a, b). The maximum activity was observed at pH 6.5, similar to purified human renin [2]. The peak and the shoulder of the pH profile were similar to those observed for purified human renin cleaving partially purified human angiotensinogen with the maxima at  $\sim 6.5$  and 8 [13,14].

Several well characterized inhibitors of human renin were tested with the recombinant enzyme. These inhibitors included commercially available statins and the small molecule inhibitor aliskiren. Pepstatin A (Isovaleryl-Val-Val-Sta-Ala-Sta) is a potent inhibitor of several aspartic proteases including cathepsin E ( $IC_{50}$  of 0.2 nM [15]), cathepsin D ( $IC_{50}$  of 0.4 nM [16]) and HIV protease ( $IC_{50}$  of 250  $\mu$ M [17]). Human renin is poorly inhibited by pepstatin A ( $IC_{50}$  of 15  $\mu$ M [18] and 36  $\mu$ M [19]), while porcine renin exhibits sub-micromolar inhibition constants with this compound ( $IC_{50}$  of 0.32  $\mu$ M [18] and 0.58  $\mu$ M [20]). The recombinant human renin was inhibited by pepstatin A with an  $IC_{50}$  of  $31 \pm 4 \mu$ M, similar to literature values (Fig. 2c).

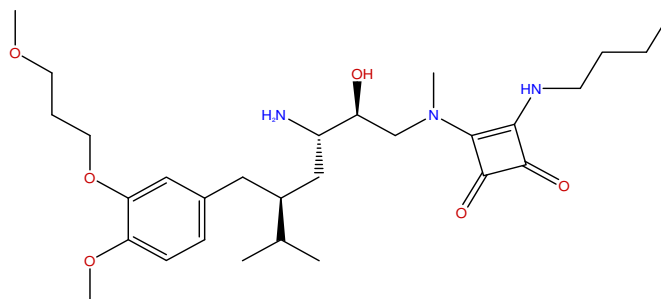
SR 42128 (Isovaleryl-Phe-Nle-Sta-Ala-Sta) is a pepstatin analog that inhibits human plasma renin activity (PRA) with the  $IC_{50}$  of 28 nM [21]. The compound is potent against purified recombinant human renin with an  $IC_{50}$  of  $4.0 \pm 0.2 \text{ nM}$  (Fig. 2c).

The recombinant renin was also inhibited by aliskiren, a potent human renin inhibitor currently marketed for hypertension as Tekturna [22]. Aliskiren is selective for human renin with a reported  $IC_{50}$  of 0.6 nM [23]. In our hands,  $IC_{50}$  value for recombinant human renin was  $0.81 \pm 0.17 \text{ nM}$  (Fig. 2c).

The recombinant renin is indistinguishable from renin purified from human sources and stable after long term (up to 3 years or more) storage at  $-80^\circ\text{C}$ . The material is suitable for functional assays and X-ray crystallography. The material had been used to generate >50 renin inhibitor complexes ranging from 1.7Å–2.7Å resolution (unpublished data). A typical experiment is shown with VTP24631 (Fig. 3). VTP24631 is a weak inhibitor of  $IC_{50}$  700 nM. Co-crystals of this compound were obtained by the hanging drop method. These crystals diffracted at 2.5Å. This complex can be used for soaking studies with



**Figure 3**  
**Renin co-crystals complexed with VTP2463I.**



potent inhibitors, which readily displace VTP24631 generating high quality crystals. Details on the structural solutions of VTP24631 and additional structures will be reported separately.

### Conclusion

This present work describes a simple, efficient method for the production and purification of active human renin. Recombinant renin can be generated in milligram quantities via a simple activation/purification sequence. Biochemical properties of the recombinant human renin are indistinguishable from those reported in the literature for purified enzyme. Renin inhibitors were active against the recombinant enzyme with potencies very similar to the inhibition constants measured for purified human renin. The material is highly pure and is suitable for supporting activity assays and structural biology efforts.

### Methods

#### Cloning and cell culture

The gene for recombinant human renin protein (accession No. [AAA60363](#), 406 amino acid residues) was cloned by PCR from a kidney cDNA library. The polymerase chain reaction conditions were optimized using Elongase polymerase mixture (Invitrogen, Carlsbad, CA) and the following primers: huRenin-fwd-5'-CGT CTA AGC TTG CCA CCA TGG ATG GAT GGA GAA GGA TCG-3' and huRenin-rev-5'-CGG TCA ATT CTA GAC TTC AGC GGG CCA AGG C-3'. The 5'-sense primer introduced a consensus Kozak translation initiation sequence [24] and a *Hind* III restriction site. The 3' antisense primer introduced an *Xba* I restriction site and a stop codon for native protein expression. The PCR product was digested to completion with *Hind* III and *Xba* I (NEB, Beverly, MA) and cloned into the mammalian expression vector pcDNA3.1 (Invitrogen, Carlsbad, CA). The complete renin sequence was

confirmed by DNA sequencing performed by BigDye terminator reaction chemistry for sequence analysis on the ABI Prism 377 (Kimmel Center Nucleic Acid Facility, Thomas Jefferson University, Philadelphia, PA). Human embryonic kidney cells, HEK 293 (ATCC, Manassas, VA) were cultured in Eagle's Minimum Essential Medium, supplemented with 10% fetal bovine serum (Hyclone, South Logan, UT), 2 mM L-glutamine, and 100 µg/ml penicillin/streptomycin (Invitrogen, Carlsbad, CA). Transfection experiments with pcDNA3.1-huRenin were conducted using Lipofectamine 2000 (Invitrogen, Carlsbad, CA) according to manufacturer's protocols. Stable transfectants were obtained by selection in media supplemented with Geneticin (800 µg/ml), and single clones were obtained by limiting dilution. A single clone was scaled up and introduced into a hollow fiber bioreactor using a medium sized cartridge with a 5 kD molecular weight cut-off (Fibercell Systems Inc, Frederick, MD) to trap the secreted enzyme in the extra-fiber space. Once the cell line was established in the bioreactor it was adapted incrementally to a serum-free media for HEK-293, SFM4HEK293 (Hyclone, South Logan, UT) which would aid purification of the protein. Protein was harvested from the extra-fiber space daily and the cell line was maintained in the bioreactor for over 6 months with no observable decrease in protein production.

#### Protein purification

The clarified conditioned medium (typically 250 – 300 ml), was loaded by gravity at 4 °C to a 30 ml Concanavalin A (Con A) column (Pharmacia/GE Healthcare, Piscataway, NJ), which had been equilibrated with Buffer A (25 mM Tris-HCl, pH 7.5, 300 mM NaCl, 0.1 mM CaCl<sub>2</sub> and 0.1 mM MnCl<sub>2</sub>). The column was then connected to the FPLC system (GE Pharmacia/GE Healthcare, Piscataway, NJ) and washed with 5 volumes of Buffer A or until the

baseline was stabilized. The prorenin protein was eluted in Buffer A supplemented with 150 mM D-methyl-mannopyranoside (Sigma-aldrich, St. Louis, MO) at slow flow rate (0.5 ml/min) in a "soak/elute" fashion. The propeptide was removed by trypsin digestion (1:100 by weight, trypsin:prorenin) at 4°C for 60 minutes. The reaction was quenched by the addition of trypsin-inhibitor (from soybean) beads (T0637, Sigma-aldrich, St. Louis, MO). The activated renin was dialyzed overnight at 4°C against Buffer B (10 mM sodium acetate, pH 5, and 10 mM NaCl). This solution was chromatographed on the 50 ml SP Sepharose Fast Flow column (Pharmacia/GE Healthcare, Piscataway, NJ) using a NaCl gradient (10 mM – 500 mM). Homogeneous renin was obtained after the gel filtration column Superdex 75 HR 10/30 (Pharmacia/GE Healthcare, Piscataway, NJ). The purified renin in a buffer containing 20 mM Tris-HCl, pH 7.0 was concentrated to 5 mg/ml, by ultrafiltration using an Amicon stirred cell (Millipore, MA) with a membrane of 10,000 MWCO (YM10), and stored at a -80°C freezer until future use. No deglycosylation was performed.

Protein samples were analyzed by matrix-assisted laser desorption ionization mass spectrometry (MALDI-MS) and by Edman's N-terminal sequencing (the Wistar Institute, University of Pennsylvania, Philadelphia, PA).

#### SDS-PAGE and protein assays

The protein samples were analyzed using precast NuPage Novex 4–12% Bis-Tris gels with MES running buffer (Invitrogen, MD). Proteins on the gel became visible after staining with 0.01% Coomassie Blue R in a solution containing 10% glacial acid and 20% methanol. Protein concentrations were measured using Bio-Rad Assay Kit (a Bradford-based dye binding method [25]), with bovine serum albumin (BSA) as standard.

#### Functional assay

The fluorescence resonance energy transfer (FRET) assay for renin activity was performed essentially as described in literature [11]. Recombinant human renin (0.3 nM) was incubated with 1 μM FRET substrate DABCYL-γAbu-Ile-His-Pro-Phe-His-Leu-Val-Ile-His-Thr-EDANS (AnaSpec, San Jose, CA) in the 50 mM BES buffer, pH 7.0 containing 0.5 mg/ml BSA, 150 mM NaCl and 2% DMSO. Incubation was performed at room temperature in a final volume of 200 μl in white opaque 96-well optiplates (PerkinElmer, Wellesley, MA). Fluorescence ( $\lambda_{\text{ex}} = 336 \text{ nm}$ ,  $\lambda_{\text{em}} = 495 \text{ nm}$ ) was measured repeatedly over extended period of time (1–2 hrs) on either Victor V or Fusion plate reader (PerkinElmer, Wellesley, MA), and the intensity of fluorescence was regressed against reaction time to derive velocities. The reaction rates were used for calculating percent inhibition values using uninhibited renin as a positive control and either no enzyme or renin inactivated

with 2 μM SR 42128 (Isovaleryl-Phe-Nle-Sta-Ala-Sta) (Bachem, King of Prussia, PA) as a negative control. IC<sub>50</sub> values were calculated by fitting the percent inhibition values *vs.* inhibitor concentration into a four-parametric model using XLFit software (IDBS, Guildford, UK).

#### Sample preparation and crystallization

The hanging-drop, vapor-diffusion method was used for renin crystallization. Renin was first mixed with 2 mM VTP24631 and incubated on ice for 30 minutes. For each hanging drop, 1 μl of the protein solution was combined with 0.6 μl of precipitant (0.1 M Tris-HCl, pH 7–8.2, 0.2 mM (NH<sub>4</sub>)<sub>2</sub>SO<sub>4</sub> and 18–26% PEG 3550). Crystals were grown at 4°C for 5–7 days and streak seeding was required for crystals to reach their maximal sizes (200–500 μm).

#### Abbreviations

BES: N, N-bis(2-hydroxyethyl)-2-aminoethanesulfonic acid; BSA: bovine serum albumin.

#### Authors' contributions

ZW designed and carried out the purification and crystallization studies, and drafted the manuscript. MGC and BBS carried out molecular cloning, cell culture work and contributed to the manuscript. YB conducted the biological assays and contributed to the manuscript. GMMcG conceived the study and participated in its design and coordination and revised the manuscript. All authors read and approved the final manuscript.

#### Acknowledgements

We thank Dr. Richard K. Harrison, Ms. Jennifer Mason and Ms. Marianne Zecher for the assay development. Special thanks are extended to Dr. Jing Yuan and Dr. Zhenrong Xu for providing the VTP24631 for co-crystallization studies.

#### References

1. Scott BB, McGeehan GM, Harrison RK: **Development of inhibitors of the aspartyl protease renin for the treatment of hypertension.** *Curr Protein Pept Sci* 2006, **7**(3):241-254.
2. Yokosawa H, Holladay LA, Inagami T, Haas E, Murakami K: **Human renal renin. Complete purification and characterization.** *J Biol Chem* 1980, **255**(8):3498-3502.
3. Holzman TF, Chung CC, Edalji R, Egan DA, Gubbins EJ, Rueter A, Howard G, Yang LK, Pederson TM, Krafft GA, et al.: **Recombinant human prorenin from CHO cells: expression and purification.** *J Protein Chem* 1990, **9**(6):663-672.
4. Nakagawa T, Nishiuchi K, Akaki J, Iwata H, Satou R, Suzuki F, Nakamura Y: **Efficient production of recombinant human (pro)renin utilizing a decahistidine tag attached at the C-terminus.** *Biosci Biotechnol Biochem* 2007, **71**(1):256-260.
5. Mathews S, Dobeli H, Pruschy M, Bosser R, D'Arcy A, Oefner C, Zulauf M, Gentz R, Breu V, Matile H, Schlaeger J, Fischli W: **Recombinant human renin produced in different expression systems: biochemical properties and 3D structure.** *Protein Expr Purif* 1996, **7**(1):81-91.
6. Pilote L, McKercher G, Thibeault D, Lamarre D: **Enzymatic characterization of purified recombinant human renin.** *Biochem Cell Biol* 1995, **73**(3-4):163-170.
7. Sharma SK, Evans DB, Tomich CS, Cornette JC, Ulrich RG: **Folding and activation of recombinant human prorenin.** *Biotechnol Appl Biochem* 1987, **9**(2):181-193.



8. Kunapuli SP, Prasad GL, Kumar A: **Expression of human angiotensinogen cDNA in Escherichia coli.** *J Biol Chem* 1987, **262**(16):7672-7675.
9. Takahashi S, Ogasawara H, Watanabe T, Kumagai M, Inoue H, Hori K: **Refolding and activation of human prorenin expressed in Escherichia coli: application of recombinant human renin for inhibitor screening.** *Biosci Biotechnol Biochem* 2006, **70**(12):2913-2918.
10. Chang VT, Crispin M, Aricescu AR, Harvey DJ, Nettleship JE, Fennelly JA, Yu C, Boles KS, Evans EJ, Stuart DI, Dwek RA, Jones EY, Owens RJ, Davis SJ: **Glycoprotein structural genomics: solving the glycosylation problem.** *Structure* 2007, **15**(3):267-273.
11. Wang GT, Chung CC, Holzman TF, Krafft GA: **A continuous fluorescence assay of renin activity.** *Anal Biochem* 1993, **210**(2):351-359.
12. Streatfeild-James RM, Williamson D, Pike RN, Tewksbury D, Carrell RW, Coughlin PB: **Angiotensinogen cleavage by renin: importance of a structurally constrained N-terminus.** *FEBS Lett* 1998, **436**(2):267-270.
13. Nasir UM, Suzuki F, Nagai T, Nakagawa T, Nakamura Y: **Tyrosine-83 of human renin contributes to biphasic pH dependence of the renin-angiotensinogen reaction.** *Biosci Biotechnol Biochem* 1999, **63**(6):1143-1145.
14. Nasir UM, Takahashi K, Nagai T, Nakagawa T, Suzuki F, Nakamura Y: **Two peaks in pH dependence of renin-angiotensinogen reaction.** *Biosci Biotechnol Biochem* 1998, **62**(2):338-340.
15. Cappiello MG, Wu Z, Scott BB, McGeehan GM, Harrison RK: **Purification and characterization of recombinant human cathepsin E expressed in human kidney cell line 293.** *Protein Expr Purif* 2004, **37**(1):53-60.
16. Knight CG, Barrett AJ: **Interaction of human cathepsin D with the inhibitor pepstatin.** *Biochem J* 1976, **155**(1):117-125.
17. Seelmeier S, Schmidt H, Turk V, von der Helm K: **Human immunodeficiency virus has an aspartic-type protease that can be inhibited by pepstatin A.** *Proc Natl Acad Sci U S A* 1988, **85**(18):6612-6616.
18. Eid M, Evin G, Castro B, Menard J, Corvol P: **New renin inhibitors homologous with pepstatin.** *Biochem J* 1981, **197**(2):465-471.
19. Hiwada K, Kokubu T, Murakami E, Muneta S, Morisawa Y, Yabe Y, Koike H, Iijima Y: **A highly potent and long-acting oral inhibitor of human renin.** *Hypertension* 1988, **11**(6 Pt 2):708-712.
20. Gross F, Lazar J, Orth H: **Inhibition of the renin-angiotensinogen reaction by pepstatin.** *Science* 1972, **175**(22):656.
21. Guegan R, Diaz J, Cazaubon C, Beaumont M, Carlet C, Clement J, Demarne H, Mellet M, Richaud JP, Segondy D, et al.: **Pepstatin analogues as novel renin inhibitors.** *J Med Chem* 1986, **29**(7):1152-1159.
22. O'Brien E: **Aliskiren: a renin inhibitor offering a new approach for the treatment of hypertension.** *Expert Opin Investig Drugs* 2006, **15**(10):1269-1277.
23. Wood JM, Maibaum J, Rahuel J, Grutter MG, Cohen NC, Rasetti V, Ruger H, Goschke R, Stutz S, Fuhrer W, Schilling W, Rigollier P, Yamaguchi Y, Cumin F, Baum HP, Schnell CR, Herold P, Mah R, Jensen C, O'Brien E, Stanton A, Bedigian MP: **Structure-based design of aliskiren, a novel orally effective renin inhibitor.** *Biochem Biophys Res Commun* 2003, **308**(4):698-705.
24. Kozak M: **Point mutations close to the AUG initiator codon affect the efficiency of translation of rat preproinsulin in vivo.** *Nature* 1984, **308**(5956):241-246.
25. Bradford MM: **A rapid and sensitive method for the quantitation of microgram quantities of protein utilizing the principle of protein-dye binding.** *Anal Biochem* 1976, **72**:248-254.

Publish with **BioMed Central** and every scientist can read your work free of charge

"BioMed Central will be the most significant development for disseminating the results of biomedical research in our lifetime."

Sir Paul Nurse, Cancer Research UK

Your research papers will be:

- available free of charge to the entire biomedical community
- peer reviewed and published immediately upon acceptance
- cited in PubMed and archived on PubMed Central
- yours — you keep the copyright

Submit your manuscript here:  
[http://www.biomedcentral.com/info/publishing\\_adv.asp](http://www.biomedcentral.com/info/publishing_adv.asp)

